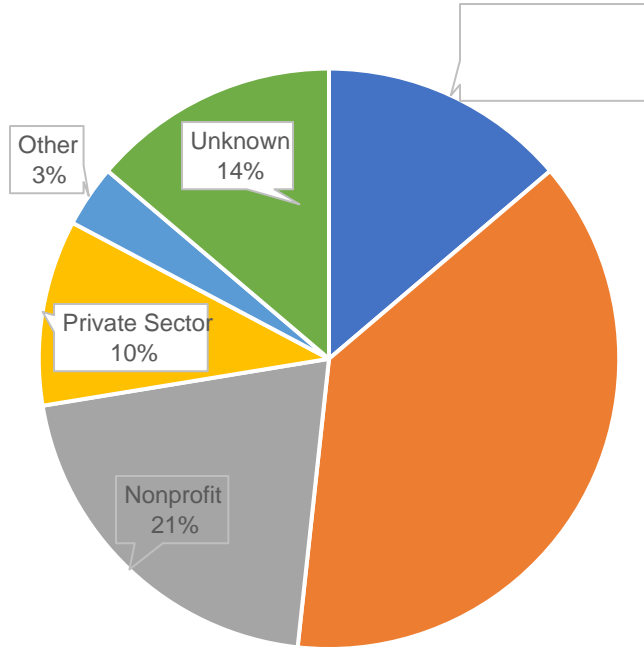
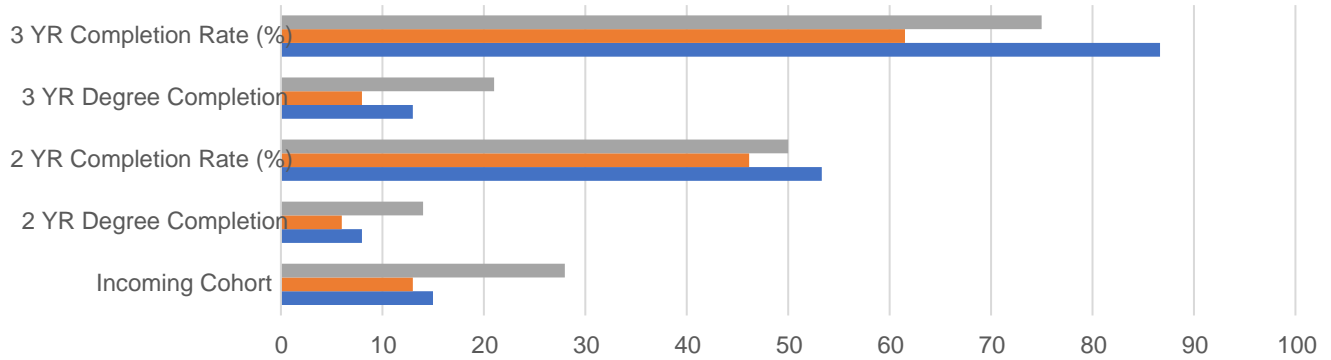


### 2021-2022 Graduate Employment Rates Count



Data is based on a total of 29 graduating MPA students from the 2021-2022 academic year.

### Degree Completion Rates 2021-2022 Academic Year (Incoming cohort = 28 students)



	Incoming Cohort	2 YR Degree Completion	2 YR Completion Rate (%)	3 YR Degree Completion	3 YR Completion Rate (%)
■ Totals	28	14	50	21	75
■ Male Population	13	6	46.15	8	61.53
■ Female Population	15	8	53.33	13	86.67